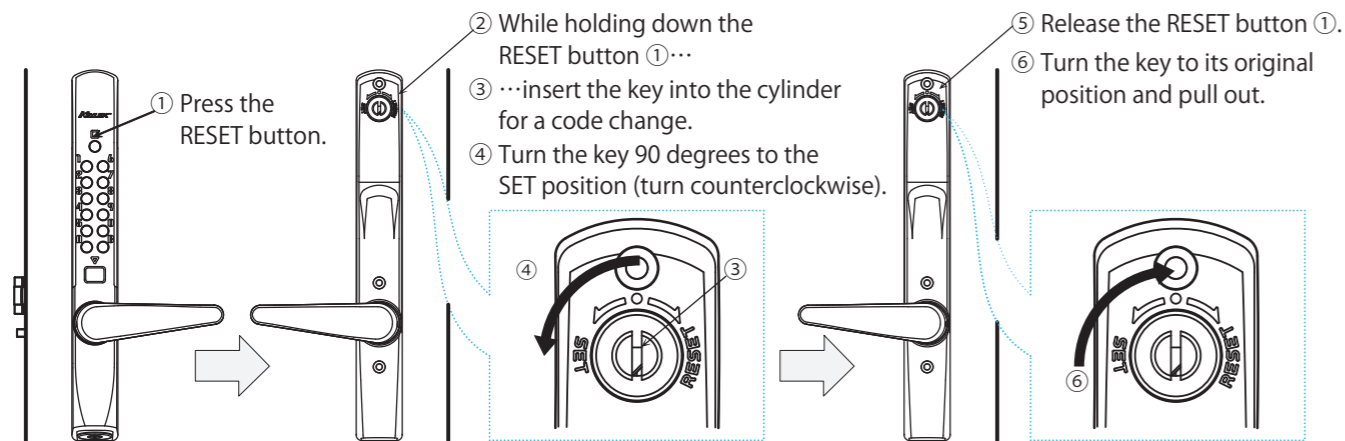




If unlock fails after changing the code

If the buttons for code entry or the ENTER button no longer function after you press the RESET button or if entering the set code fails to unlock the door, do the following to clear all set codes:



⑦ Press the RESET button, then press the ENTER button. Check to confirm that the latch retracts when you push down on the lever handle.

⑧ Set a new code. Refer to "How to change the set code" on top of page 3.



CAUTION Observe the following precautions to ensure safe use of the product:



- Caution during installation
 - Always use a manual screwdriver to tighten mounting screws. Do not use an electric screwdriver.
- Loosening mounting screws
 - Tighten mounting screws periodically. Loose screws compromise protection against burglaries and may cause the product to come loose and fall off.
- Excessive protrusion of strike plate
 - If the edges of the strike plate extend too far from the mounting surface, they can cause injury or catch on and tear clothing. Ask the contractor performing the installation to replace the present strike plate with an appropriate one.
- Use for other purposes
 - Do not hang on the lever by hand, use the lever as a foothold, or hang objects on the lever. Doing so may lead to hazardous conditions.
- ◆ Caution for use (to prevent malfunctions)
 - Do not attempt to disassemble or modify the product.
 - Do not close the door with the deadlatch or deadbolt extended.
 - Do not operate the lever while pressing buttons.
- ◆ How to extend the useful life of the product
 - Do not apply lubricant to the lock case.
 - To clean the product surface, wipe with a soft dry cloth. Wipe the buttons and surrounding area regularly. If they are visibly dirty, clean with a neutral detergent.

If you see any abnormalities in the door or fittings to which the product is installed, consult a certified locksmith.

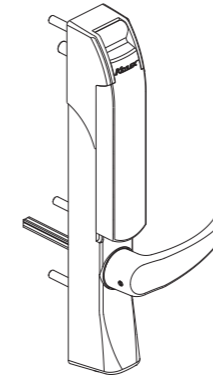
7264401

KEYLEX 3100

KEYLEX 3100
Autolock Lever Type

Instruction Manual (for Owner)

Thank you for your purchase. Please provide this Instruction Manual to the owner or tenant. Be sure to read this manual. After reading, keep in a safe place for ready reference.



For added security, we recommend periodically changing the set code. To make it difficult for others to obtain the entered code by observation, we recommend pressing random buttons (other than those used to enter the set code) during the locking process.

< Record of set codes >
year month day
year month day
year month day
year month day
year month day
Current set code

Important note regarding code setting

- The code set for the KEYLEX 3100 can be from one to 12 digits (4,096 combinations).
- The order in which the set numbers is entered cannot be set and does not affect the validity of the code entered.
Example: When the set code is 1 - 2 - 3
The lock can be unlocked by pressing 1 - 2 - 3, 2 - 3 - 1, 3 - 1 - 2, or 1 - 3 - 2.
- Each button can be used only once in entering the code. (Codes requiring more than one press of the same button is invalid and cannot be set.)
Example: 1 - 1 - 2 - 3 or 1 - 2 - 2 - 3 cannot be set.

NAGA
SAWA

www.nagasawa-mfg.co.jp

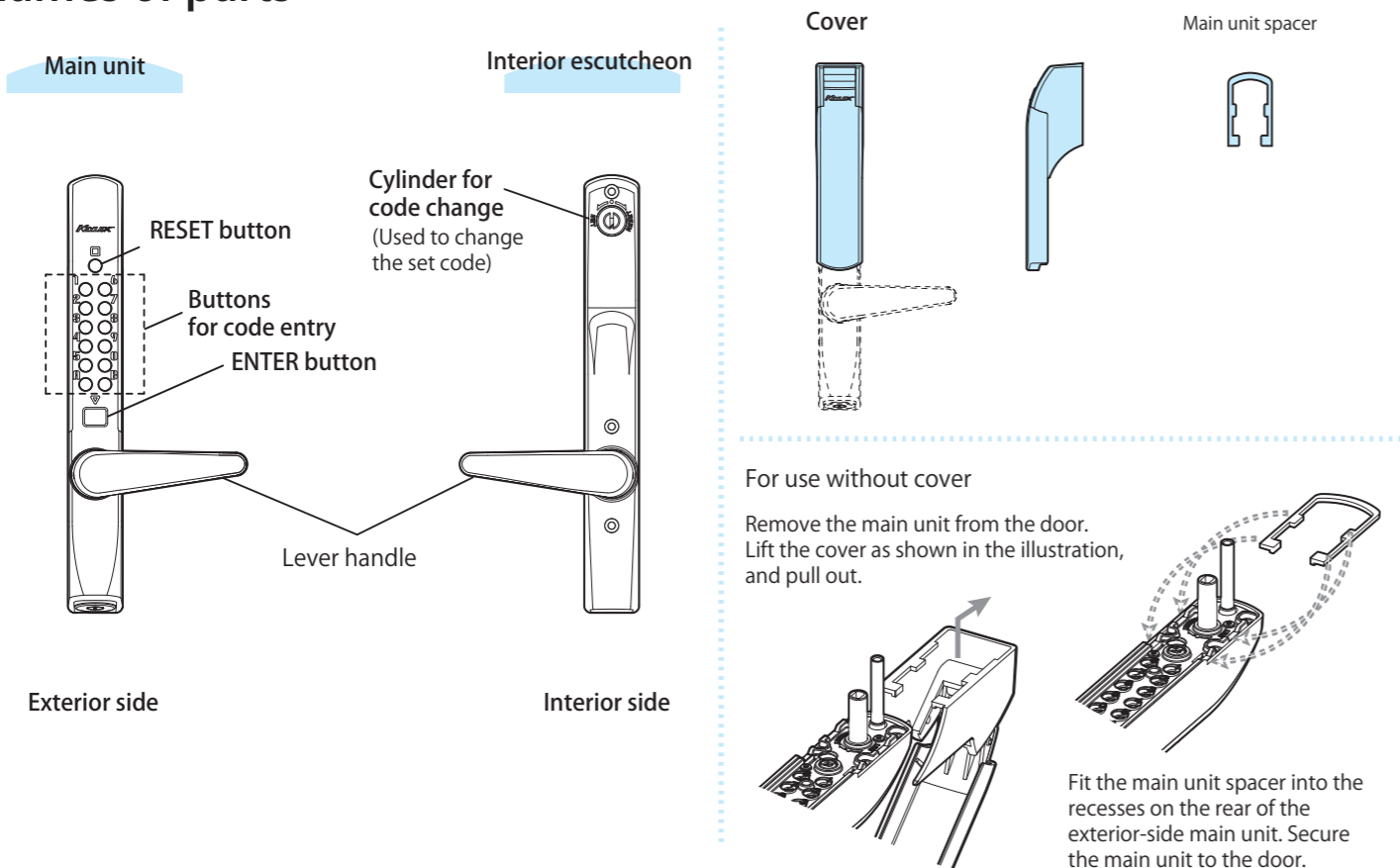
Nagasawa Manufacturing Co., Ltd.

Tel: +81 3 5383 1811

E-mail: contact@nagasawa-mfg.co.jp

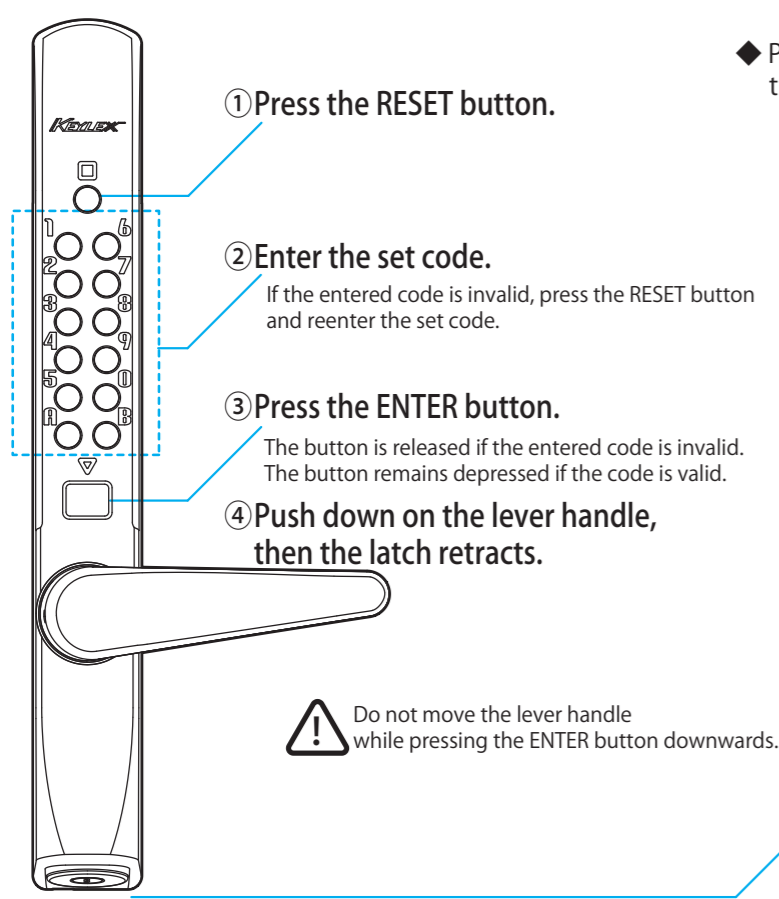
Web: www.nagasawa-mfg.co.jp

Names of parts

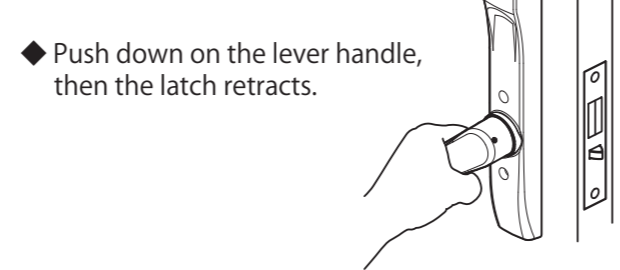


How to unlock the door

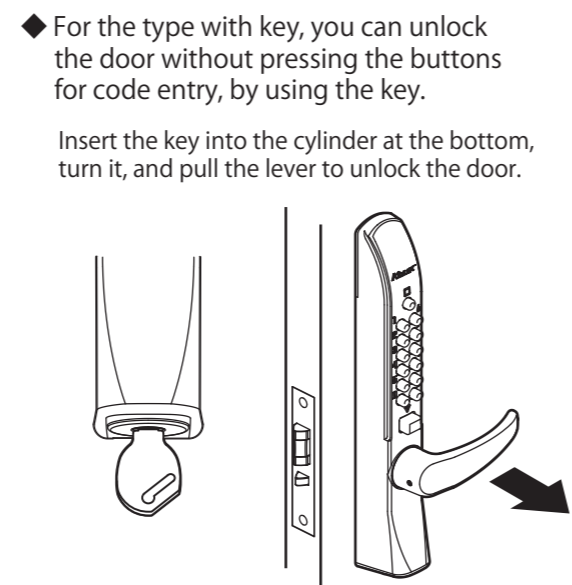
Unlocking the door using the buttons



Unlocking the door from the interior side



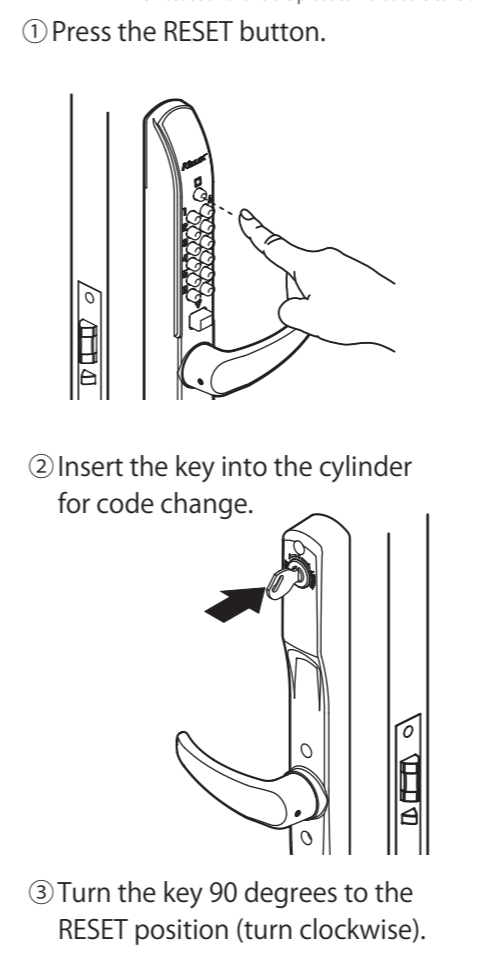
Unlocking the door using the key



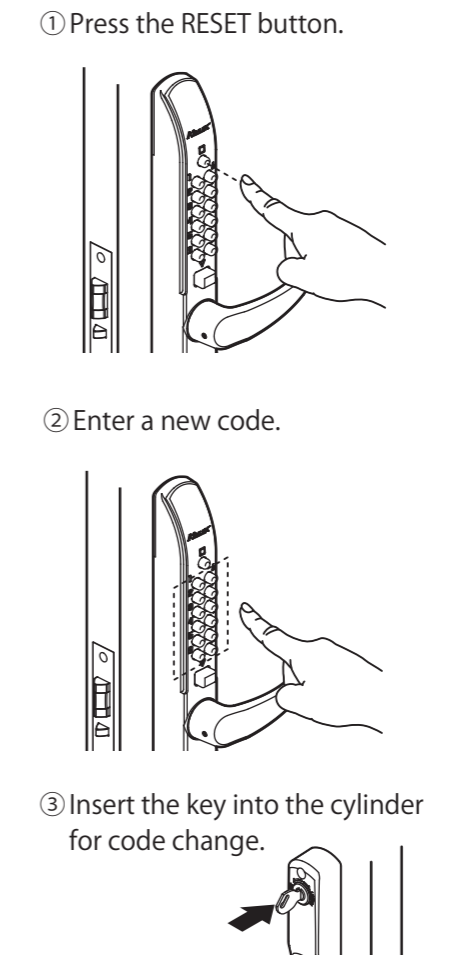
How to change the set code

Clearing the set code

The illustration shows the product without the cover.

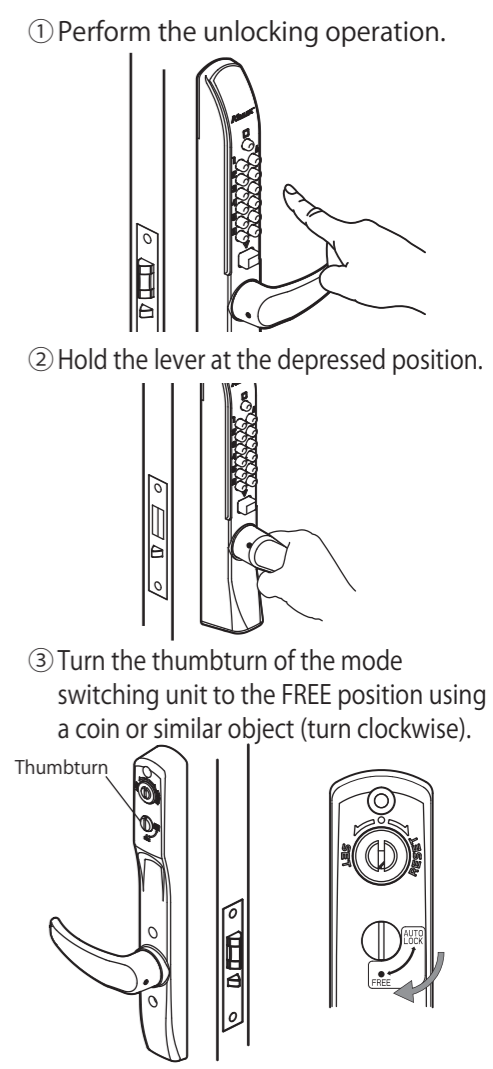


Setting a new code



How to switch to FREE

This feature is available with the optional FREE type. If the product is switched to FREE, the door will not lock automatically when closed.



Switching to AUTO LOCK

