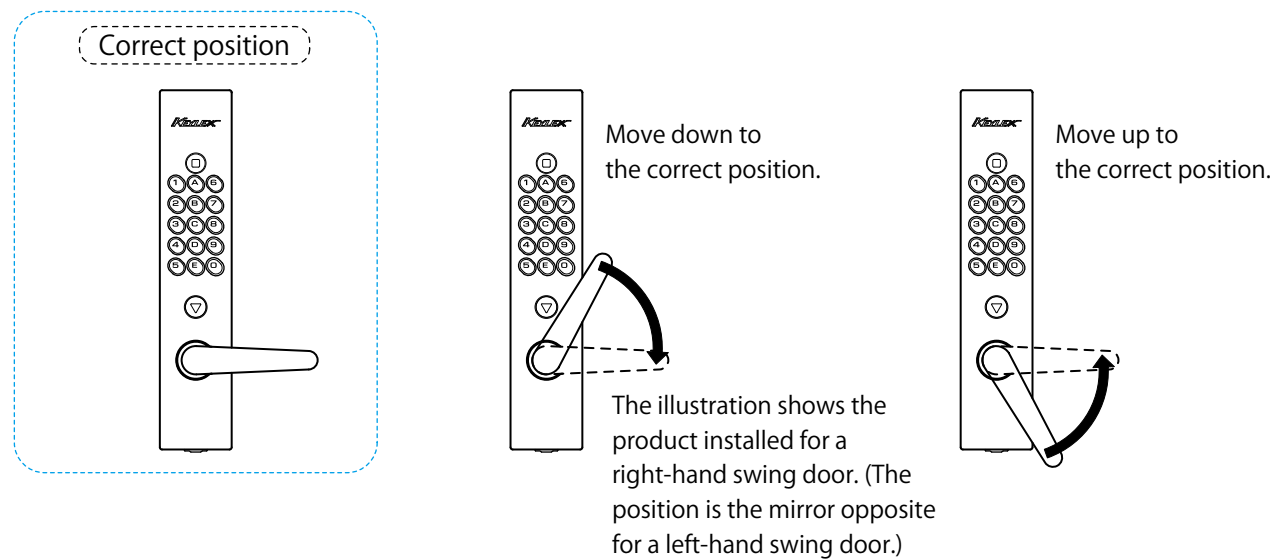


## If the lever handle is not at the correct position

If the lever handle is positioned as shown below, move it to the correct position.

The lever handle incorporates a safeguard to prevent lock picking. If pressure is applied to move the lever without pressing the code entry buttons, a safeguard that protects the internal mechanism will allow the lever handle to swing free and stop at the bottom (top) position. This is not a defect.



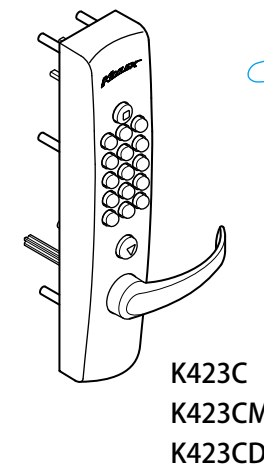
# KEYLEX<sup>®</sup> 4000 Prime

7261510

KEYLEX 4000  
Autolock Lever  
Cylinder type

## Instruction Manual (for Owner)

Thank you for your purchase. Please provide this Instruction Manual to the owner or tenant.  
Be sure to read this manual. After reading, keep in a safe place for ready reference.



For added security, we recommend periodically changing the set code.  
To make it difficult for others to obtain the entered code by observation, we recommend pressing random buttons (other than those used to enter the set code) during the locking process.

| < Record of set codes > |       |     |
|-------------------------|-------|-----|
| year                    | month | day |
| year                    | month | day |
| year                    | month | day |
| year                    | month | day |
| year                    | month | day |
| Current set code        |       |     |



## CAUTION Observe the following precautions to ensure safe use of the product

- Caution during installation**
  - Always use a manual screwdriver to tighten mounting screws. Do not use an electric screwdriver.
- Loosening mounting screws**
  - Tighten mounting screws periodically. Loose screws compromise protection against burglaries and may cause the product to come loose and fall off.
- Excessive protrusion of strike plate**
  - If the edges of the strike plate extend too far from the mounting surface, they can cause injury or catch on and tear clothing. Ask the contractor performing the installation to replace the present strike plate with an appropriate one.
- Use for other purposes**
  - Do not hang on the lever by hand, use the lever as a foothold, or hang objects on the lever. Doing so may lead to hazardous conditions.
- ◆ Caution for use (to prevent malfunctions)**
  - Do not attempt to disassemble or modify the product.
  - Do not close the door with the deadlatch extended.
  - Do not operate the lever while pressing buttons.
- ◆ How to extend the useful life of the product**
  - Do not apply lubricant to the lock case.
  - To clean the product surface, wipe with a soft dry cloth. Wipe the buttons and surrounding area regularly. If they are visibly dirty, clean with a neutral detergent.



## Important note regarding code setting

- The code set for the KEYLEX 4000 can be from one to 15 digits (32,768 combinations).
- The order in which the set numbers is entered cannot be set and does not affect the validity of the code entered.  
Example: When the set code is 1 – 2 – 3  
The lock can be unlocked by pressing 1 – 2 – 3, 2 – 3 – 1, 3 – 1 – 2, or 1 – 3 – 2.
- Each button can be used only once in entering the code. (Codes requiring more than one press of the same button is invalid and cannot be set.)  
Example: 1 – 1 – 2 – 3 or 1 – 2 – 2 – 3 cannot be set.

If you see any abnormalities in the door or fittings to which the product is installed, consult a certified locksmith.



www.nagasawa-mfg.co.jp

Nagasawa Manufacturing Co., Ltd.

Tel: +81 3 5383 1811

E-mail: contact@nagasawa-mfg.co.jp

Web: www.nagasawa-mfg.co.jp

## Basic operations

Check before use.

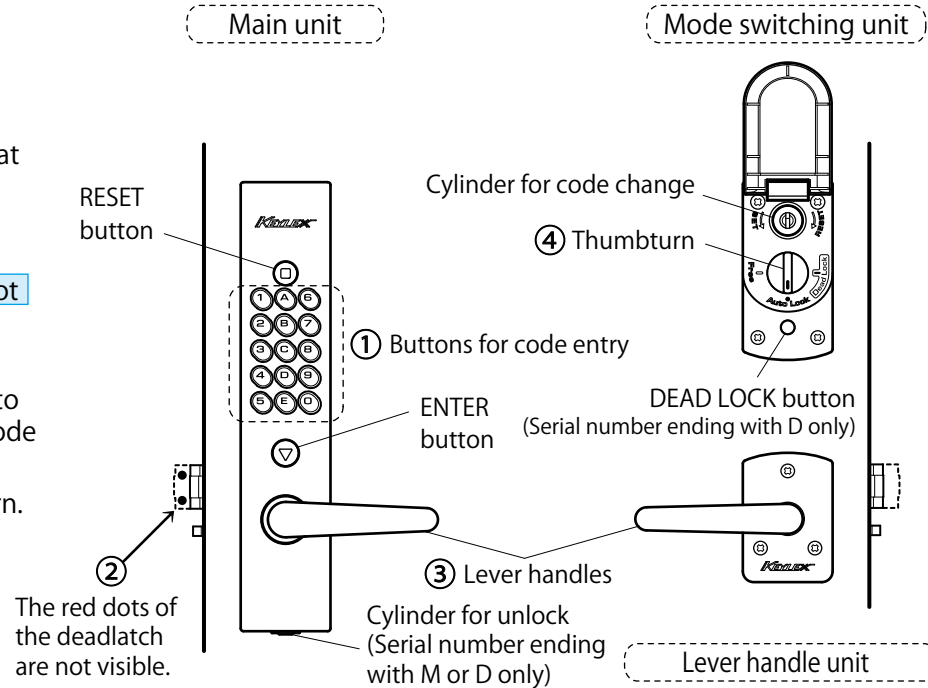
- ① Set code
- ② The red dots of the deadlatch for the lockset are not visible.  
(If visible, move the lever handle so that the deadlatch returns to the correct position).
- ③ The lever handle turns sideways.  
(If not, refer to "If the lever handle is not in the correct position" on page 4.)

\* For the type with key (serial number ending with M or D), you can use a key to unlock the door without pressing the code entry buttons.

I: Insert the key into the cylinder and turn.  
(Only the deadlatch retracts.)

II: Keep the key turned, then pull the lever to open the door outward.

\* The illustration shows the product installed for a right-hand swing door. (The position is the mirror opposite for a left-hand swing door.)



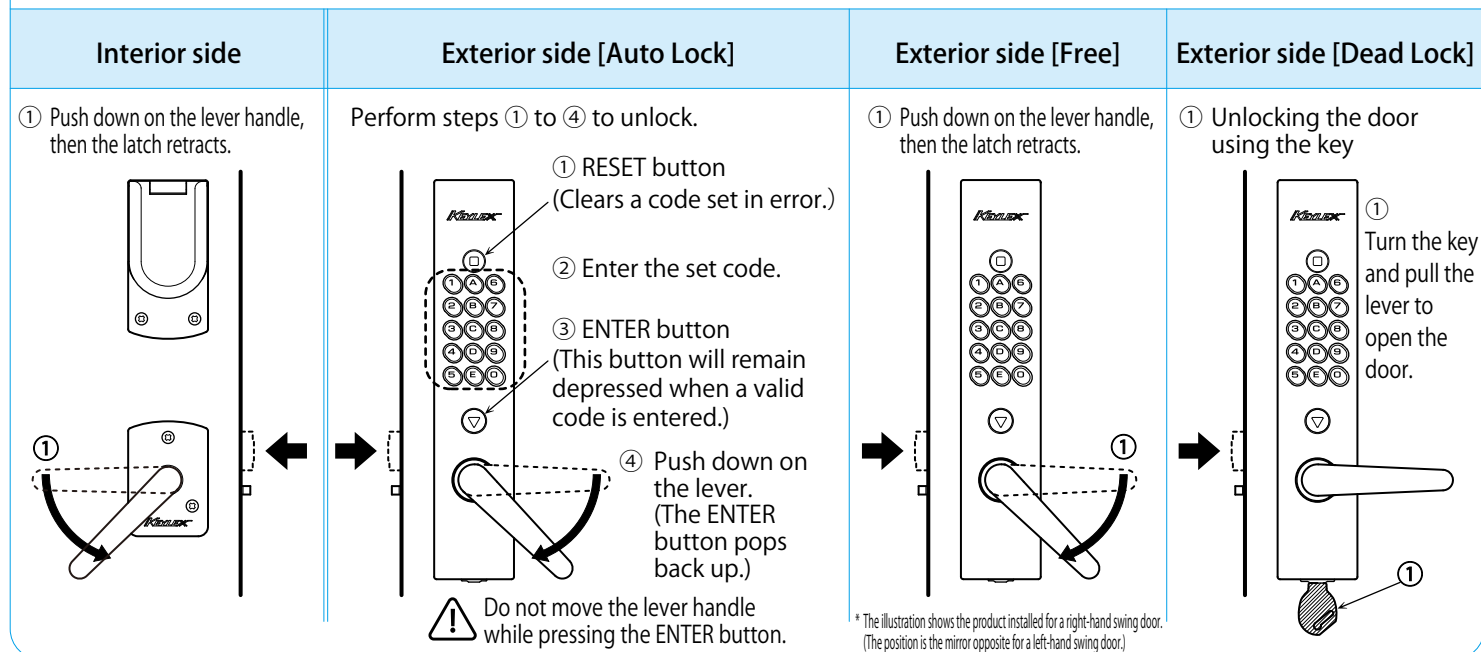
- ④ How the door is locked/unlocked from the exterior side depends on the position of the thumbturn.  
From the interior side, move the lever handle to unlock the door regardless of thumbturn position.

**Auto Lock** Confirm that the thumbturn for the mode switching unit on the interior side is at the Auto Lock position (default position when shipped from factory). The door locks automatically when closed. To unlock the door from the exterior side, press the code entry buttons or use the key.

**Free** Confirm that the thumbturn for the mode switching unit on the interior side is at the Free position. The door does not lock automatically when closed. Move the lever handle to unlock the door from either side.

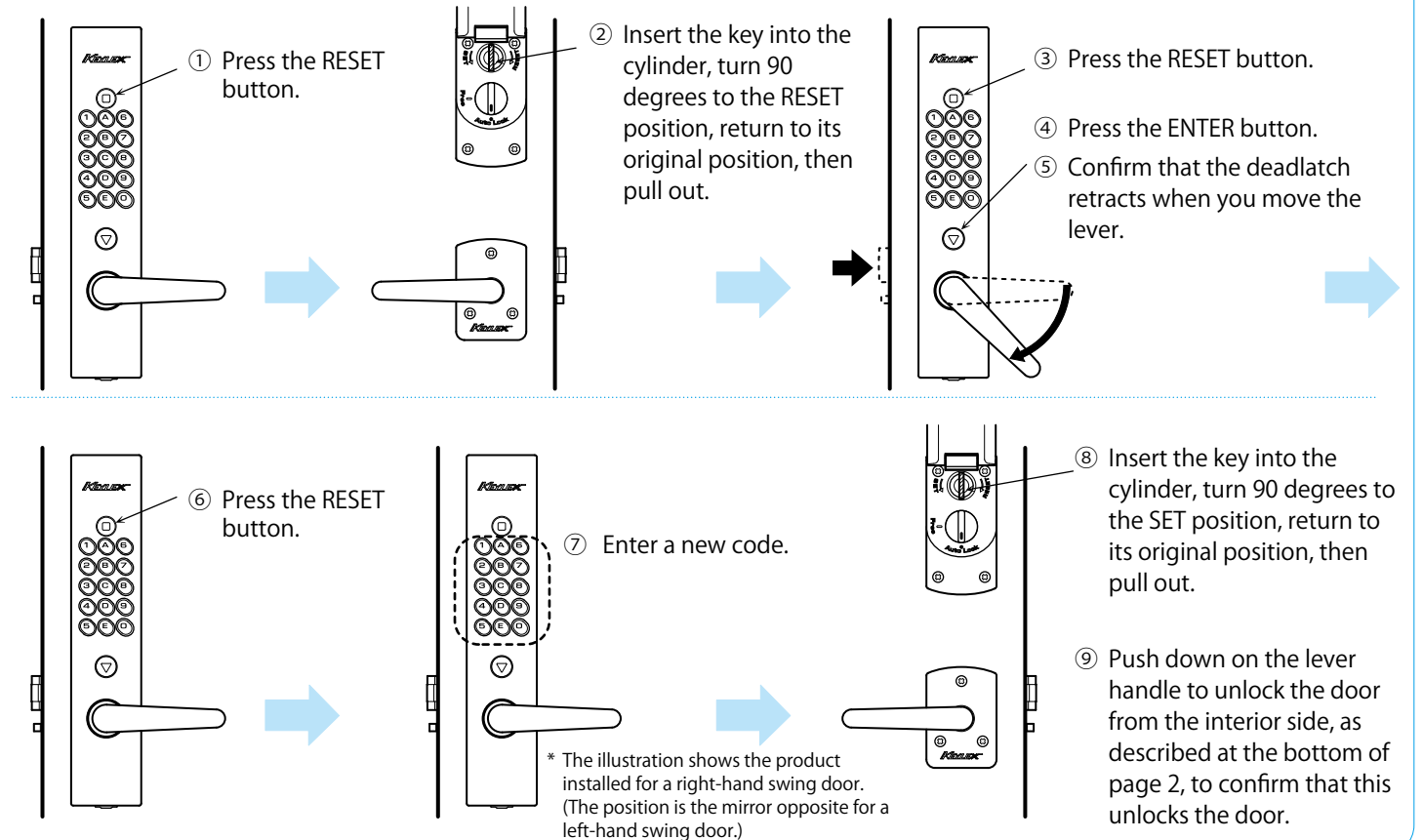
**Dead Lock** Confirm that the thumbturn for the mode switching unit on the interior side is at the Dead Lock position. Note that this applies to the lock incorporating the DEAD LOCK button. The door locks automatically when closed. A key is required to unlock the door from the exterior side. This feature is useful if you want to disable unlocking via the buttons to limit the number of people capable of unlocking the door.

⚠ The key is required to unlock the door from the exterior side. Always carry the key with you after setting the product to Dead Lock.

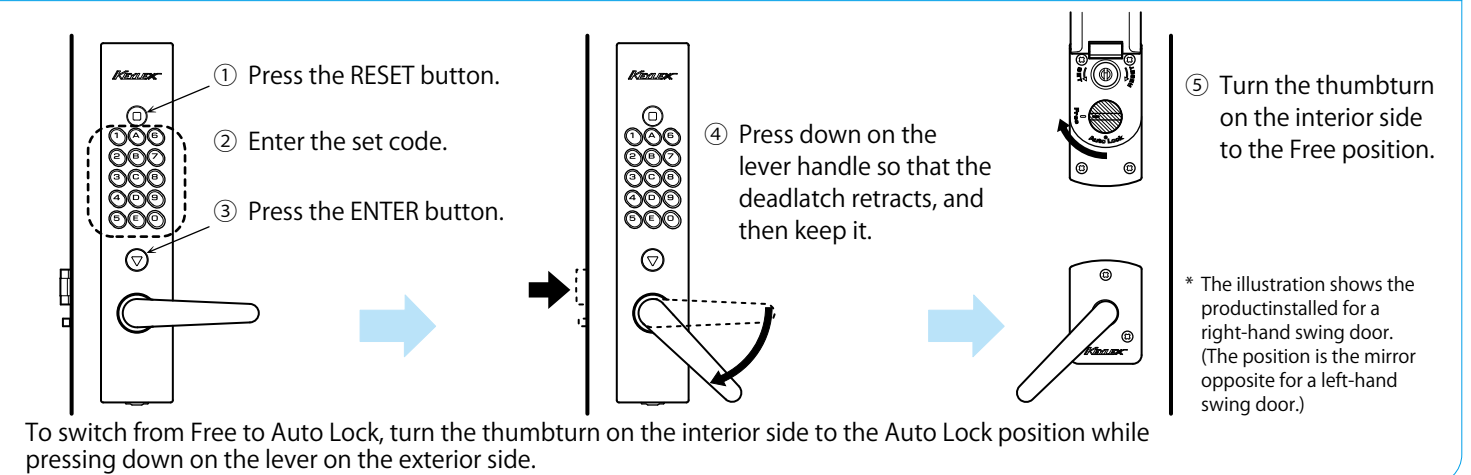


## How to change the set code You can change the set code without removing the product from the door.

【How to change the set code】 Perform this procedure with the door open.



## How to switch to FREE



## How to switch to Dead Lock

